

LW-PX800

PRINTER FEATURES


A compact design and useful features make this printer the perfect solution for industrial label printing.

SIMPLE
Cartridges load from the top for a more compact design and quick-change supplies

PEELGuard® corner trimmer extends label life.



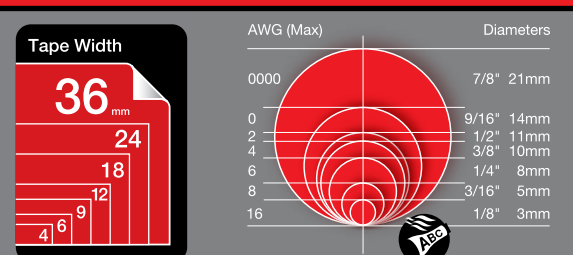
FLEXIBLE



Connect multiple users wirelessly with iOS or Android or through a LAN.



VERSATILE



Print on over 160 tape supplies up to 1.5" wide and heat shrink tubes up to 7/8" diameter

iLabel



For iOS and Android

POWERFUL



Up to 35mm/sec

Quietly prints up to 35mm/sec and can reduce tape waste to 1mm*.



Half-Cut

Create continuous series of half-cut labels for large print jobs

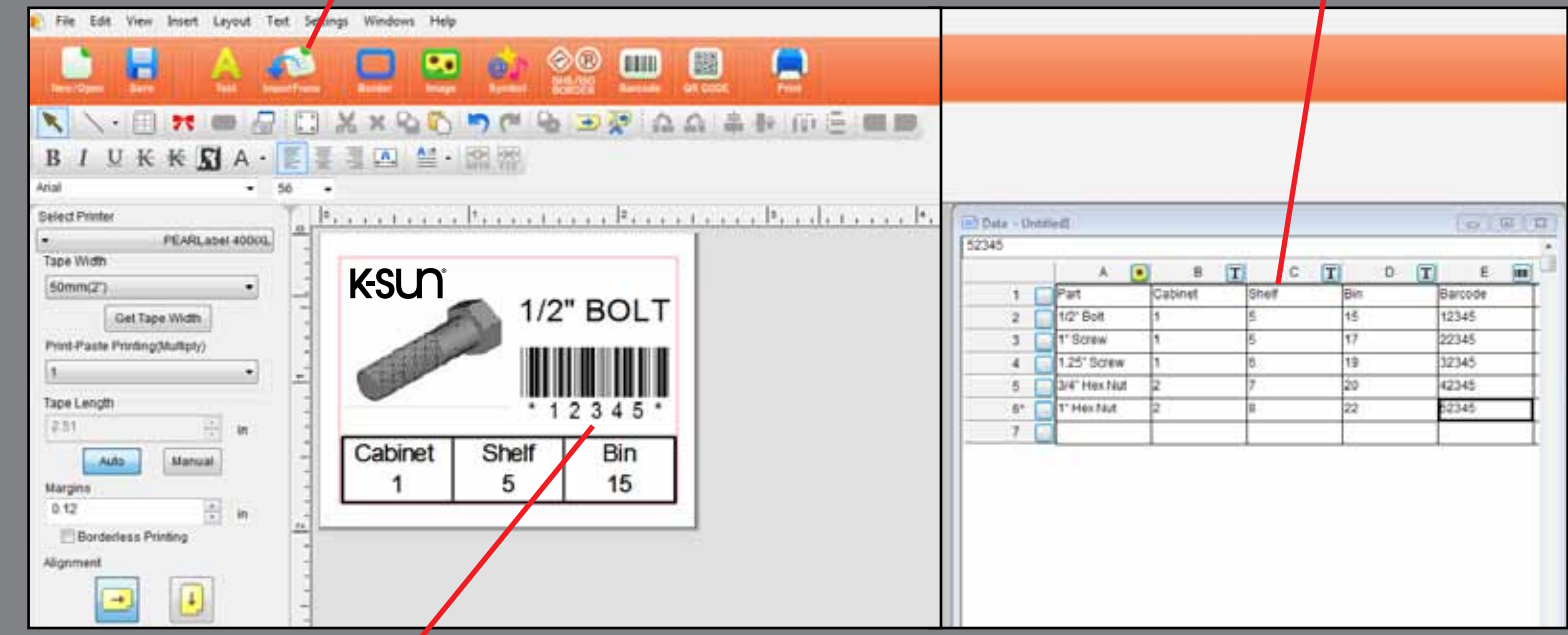
*A 10mm lead is standard on a single label, or the first label in a batch

Software Features

The LW-PX800 includes Label Editor Professional, the most powerful label-creating software built for performance and designed for simplicity.

Easy-to-use icons and clean layout streamline in-house labeling.

Import from Excel, Word, or create your own data table.



Customize label templates with logos, images, and barcodes. Files are easily saved, recalled, and shared.

100s of pre-formatted templates for facility, safety, or general labeling.



Communicate clearly with over 1,000 symbols, pre-formatted signal words in 23 languages, and GHS/ISO images.

