



**Neumann**  
MARKING SOLUTIONS

*Identification Systems for Heavy Industry*

# Guide for LABELING IN THE TELECOMMUNICATIONS INDUSTRY

The ANSI/TIA-606-B labeling standard is backward compatible with ANSI/TIA/EIA-606-A Addendum 1 and is compatible with the international standard ISO/IEC TR 14763-2-1 identifiers.

## TYPICAL TELECOM LABELING APPLICATIONS:

- Telecommunications spaces
- Horizontal pathways and cabling
- Patch panels
- Punch down blocks
- Work area faceplates
- Grounding locations
- Backbone pathways and cabling
- Fire stopping locations

The ANSI/TIA-606-B labeling standard brings together the 606-A and TIA's 942 data centre standard. These two concepts came together in Addendum 1 to 606-A. The formats for label identifiers are clearly shown and explained in the standard. The purpose of this guide is to discuss best practices in labeling to this standard. For details please refer to the standard, BICSI, or this excellent article:



[www.cablinginstall.com/articles/print/volume-20/issue-4/features/ansi-tia-606-b-standard-approved-for-publication.html](http://www.cablinginstall.com/articles/print/volume-20/issue-4/features/ansi-tia-606-b-standard-approved-for-publication.html)

As in previous standards, labels are to be machine generated, regardless of the style of marking; labels, self-laminating wire wraps or heat shrink sleeves. A different way of doing things now is that patch panels can be integrated on vertical rails to save space. The patch panel identifier labels must now be placed vertically on the inside of the cabinet; be sure to include your alpha designation for left (L) and right (R).

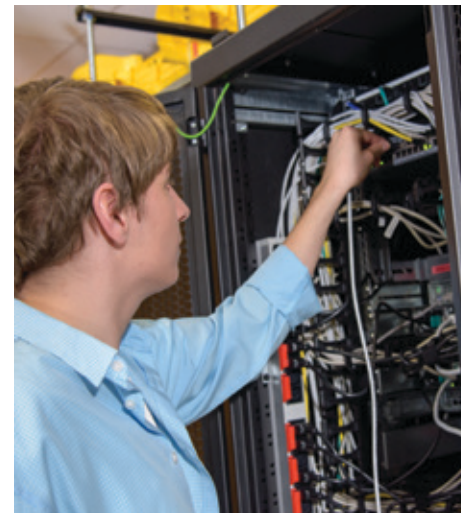
Coloured labels are recommended under the new standard, but are not a requirement. There is a cost to having an additional inventory of labels and not fully utilizing it. If colours are used, the installer should refer to the pantone colours outlined in Section 10.2.2, Table 4 of the 606-B standard.

Once you have determined the class and know what you should label, the next step is to create your labels following the standards' guide and apply the labels. Many label printer manufacturers offer free software with templates to make your label printing easy, clear and professional. Colour combinations of media and ribbon

offered by label manufacturers should satisfy all optional requirements under the standard.

A properly labeled network installation will:

- **SAVE YOU TIME**  
Time invested in design, installation and labeling will be well worth it when you do necessary maintenance, repairs or modifications.
- **SAVE MONEY**  
Eliminate the need for costly, time consuming testing.
- **ADD VALUE**  
Separate you from the competition by adding professionalism.



**Your label and printer supplier will be able to assist you in selecting a printer with the appropriate supplies for your job.**

**Neumann Marking Solutions**  
T: 780-434-9152 F: 780-430-1382  
Toll Free: 1-800-268-7636

#18, 7251- 67 Street, Edmonton, AB T6B 3N3  
[neumannmarking.com](http://neumannmarking.com)

